

Ship Inspection Management System (SIMS)

SIMS Training Session London 2nd February 2009

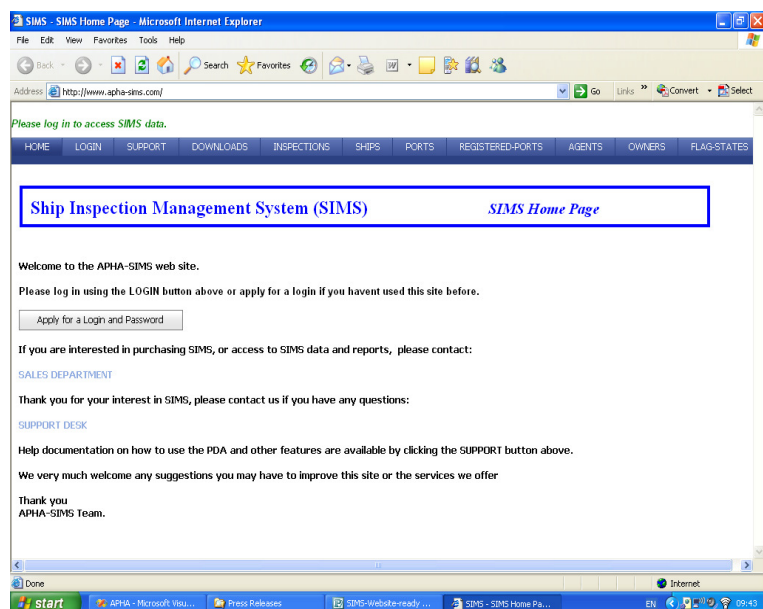
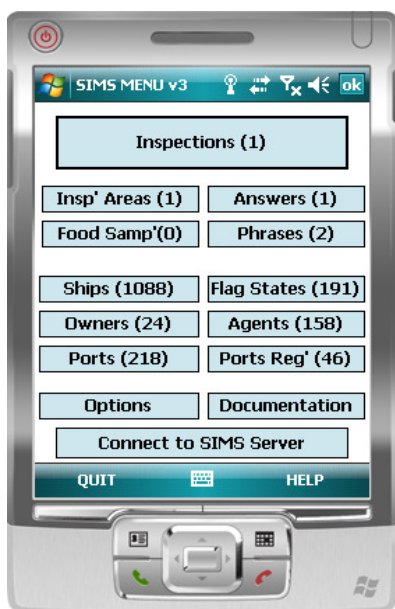
11am/4pm (ish)

Buffet lunch to be served at an appropriate time

Agenda

1. Introduction by APHA
2. Overview of SIMS System
3. Using and Configuring your PDA
4. Entering a SHIP
5. Entering Agents/Owners/Ports/Registered Ports/Flag States
6. Entering an Inspection
7. Printing an Inspection
8. Uploading data to the SIMS web site
9. SIMS Web site - Overview
10. SIMS Web site - Searching for Inspections and other data
11. SIMS Web site - Viewing, printing and downloading Certificates
12. Getting help - documents available on PDA and SIMS Web site. Support Options
13. Make a suggestion for a change or addition to SIMS features

(Questions are welcome at anytime)



MC Computer Systems Ltd

phone: 0845 009 3103
fax: 0845 009 3105

email: support@apha-sims.com
web: www.apha-sims.com

