

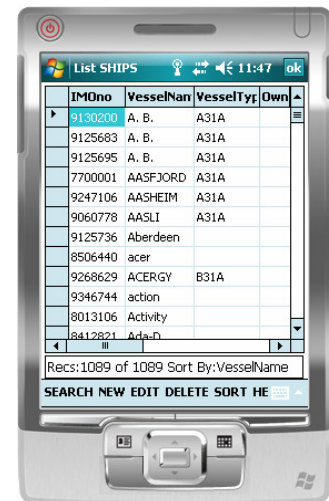
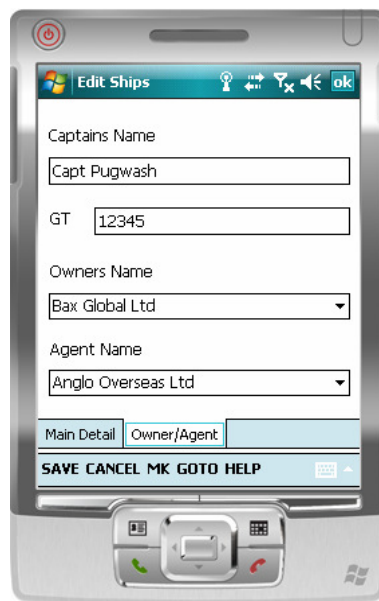
SIMS

(Ship Inspection Management System)

How do I..... enter a ship?

This document explains how to enter a new ship.

1. Start at the **MAIN MENU**.
2. Tap on **SHIPS**.
3. You will be presented with a list of the ships already in the system.
4. To enter a **NEW** ship tap on **NEW** at the bottom of the screen.
5. If you say yes, you will be taken to the new ship screen.



6. Enter the ship data in each field then **SAVE** to save your changes or **CANC** to abort.

MC Computer Systems Ltd

phone: 0845 009 3103
fax: 0845 009 3105

email: support@apha-sims.com
web: www.apha-sims.com



