

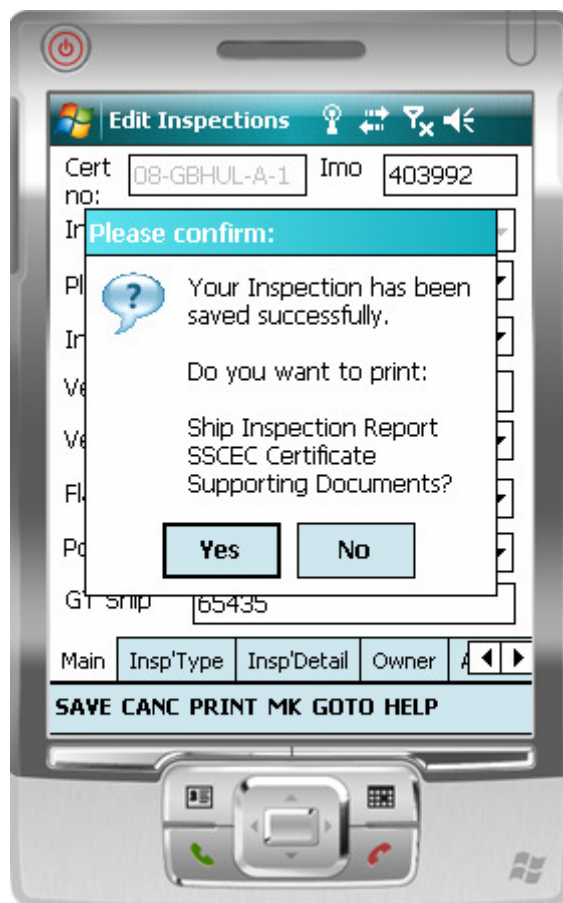
# SIMS

(Ship Inspection Management System)

## How do I..... print an inspection certificate and supporting documents?

This document explains how to print a **Ship Inspection Report** and **SSC Certificate**.

1. Ensure that the **connection to the printer** is established (see separate how do is sheet on how to set up the printer).
2. After you have saved an Inspection (see separate how do I sheet on how to enter an inspection) the system will ask if you want to print the **Ship Inspection Report** an the **SSC Certificate**.
3. If you say **yes**, you will be guided through to insert paper into your printer for each page before the actual printing.
4. You will have the option to **cancel the printing** should you wish to.
5. If, after you have printed , you can re-print by clicking on the **PRINT** button on the bottom of the inspection screen, either **Ship Inspection Report**, the **SSC Certificate** or both can be printed.



MC Computer Systems Ltd

phone: 0845 009 3103  
fax: 0845 009 3105

email: support@apha-sims.com  
web: www.apha-sims.com

