

SIMS

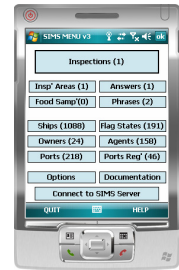
(Ship Inspection Management System)

How do I..... set up places of inspection?

This document explains how to set up places of inspection on the system.

1. Start at the **MAIN MENU**.

2. Tap on **OPTIONS**.



3. Tap on **PLACES OF INSPECTION**.

You will be presented with a list of places of inspection if any.



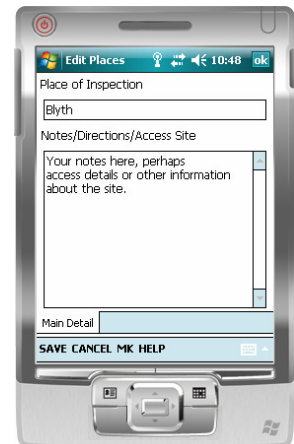
4. Tap on **NEW** to enter a new place of inspection.

5. Enter the **PLACE OF INSPECTION** and any **NOTES** or **DIRECTIONS**.

6. Either click on **SAVE** to save your changes or **CANC** to abort.

From now on, the new **place of inspection** will be in the list of places (drop down list) when you enter an inspection.

Please note, these are **NOT** ports, but areas/docks etc within your port area.



MC Computer Systems Ltd

phone: 0845 009 3103
fax: 0845 009 3105

email: support@apha-sims.com
web: www.apha-sims.com

